

The official newsletter of the Executive Women of the Palm Beaches Foundation



A Message from Our President:

Dear EWPB Members,
Fall is officially here—although with our hot and steamy weather, it may not quite feel like it yet! Still, there's no denying that we're back in full swing, and what a fantastic start to the season it has been.

It was wonderful to see so many familiar faces and to meet new friends at our Season Opener at Morton's. A special highlight of the evening was the launch of our new Corporate Membership Initiative, designed for businesses that want to support and engage up to five members. We're thrilled about the possibilities this new offering brings to our organization and to the local business community.

We're also incredibly excited to announce our Diamond Earring Raffle, generously organized by Elizabeth Hamma of Hubbard Radio. Raffle tickets are just \$5 each and will be available at all upcoming events. The lucky winner will be drawn at our Holiday Luncheon in December—just in time to add a little sparkle to the season!

Behind the scenes, our committees have been hard at work. We received a record number of scholarship applications this year, and we'll be awarding our Scholarships at the reception on October 14th. Additionally, the Kwasman Grant Committee is currently reviewing applicants, with the grant to be presented at our Fall Luncheon on October 23rd.

We're energized, engaged, and looking forward to a season filled with meaningful connections, impactful programs, and continued growth. Thank you for being part of this incredible community.

Warmly,
Kae Jonsons

In this issue:

Upcoming
Events P. 2

Member
Spotlight P.3

New Members
P. 4

Event Photos P.5



SEPTEMBER 2025

Upcoming Events

Reoccurring:

Breakfast Bunch

First Friday of the Month, 8:00am
Lili's Cafe, Palm Beach Gardens

Hidden in Plain Sight:

Myths, Facts, and What You Can Do to End Human Trafficking

October 6th, 5:30pm
Girl Scouts of SE FL, Lake Worth

Scholarship Reception

October 14th at 5:30pm
Extraordinary Charities

Fall Foundation Luncheon

October 23rd, 11:30am
Marriott West Palm Beach

Holiday Luncheon

December 12th 11:30am
PGA National

2nd Annual Trailblazers Panel:

Celebrating the Achievements of Black Women in Palm Beach County

February 26th at 8:00am
Riviera Beach

Save the Date:

Women in Leadership Awards Luncheon

April 16th
Kravis Center

Event details & registration at www.ewpb.org

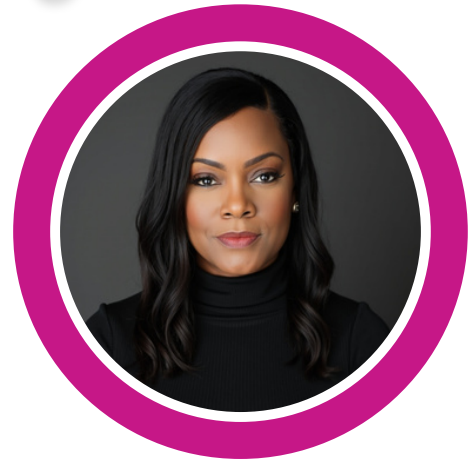
Outreach October

October is shaping up to be one of our busiest months for community outreach at EWPBF! ☀️ We'll kick things off with our Human Trafficking Awareness Event on October 6th, an eye-opening program designed to educate and empower our community to take action. Later in the month, we'll come together at the Scholarship Reception to honor our incredible recipients and the donors who make these life-changing awards possible.

And on October 23rd, we'll host our annual Fall Foundation Luncheon, where we will proudly present the Lois Kwasman Grant and the Lois Pope Grants for Community Impact to outstanding organizations making a difference in Palm Beach County. October is all about connection, impact, and celebrating the heart of our mission—empowering women and girls in our community.

Member Spotlight:

CHARISMA ADAMS FOUNDER & CEO, ARTICULATE CONSULTING GROUP



EWPBF Involvement so far:

As a new member, I'm excited to begin building relationships, learning from other accomplished women leaders, and adding my voice and expertise to the EWPBF community.

What path brought you to your current role or business?

My professional journey has been rooted in bridging people, opportunities, and impact. For over 20 years, I've worked in construction development, politics and economic development —spaces where community voices are often overlooked. Founding Articulate Consulting Group allowed me to create a firm dedicated to public participation, community engagement, and ensuring economic equity in major projects. Today, I have the privilege of advising developers, public entities, and nonprofits while helping underrepresented businesses and residents gain access to opportunities that create lasting impact.

What inspired you to join Executive Women of the Palm Beaches Foundation?

I joined because I believe in the power of women coming together to lead change. Palm Beach County has incredible women shaping business, philanthropy, and community initiatives, and I wanted to be in that circle of influence, learning and contributing. Already, the connections I've made have expanded my perspective and reinforced the importance of building spaces where women can thrive collectively.

What's one accomplishment you're most proud of?

One of my proudest accomplishments has been launching Nourish, a one-day wellness experience for Professional Women of Color. Creating that space reminded me how necessary it is for women leaders to pause, restore, and reconnect with themselves in order to continue pouring into others. It was a blend of my faith, leadership, and commitment to community. Seeing women who are often overlooked yet remain dedicated to serving others, have the opportunity to be refreshed and refueled has been a true highlight of my journey.

What advice would you give to other women leaders in Palm Beach County?

Give yourself permission to lead authentically. It's easy to get caught up in titles, expectations, and constant productivity, but your greatest strength lies in your unique perspective and presence. Lead with both strategy and soul.

What's something fun or surprising about you that most people don't know?

I am a cigar lounge co-owner and a bit of a connoisseur when it comes to pairing luxury experiences with community. Most people don't expect me to be equally at home in a hard hat on a construction site and in heels hosting a curated experience—but that duality is very much who I am.

Welcome New Members:

Nia Thomas
Dr. Wanda Gangoo
Barbara Lentz
Mary Beth Mudrick

Corporate Membership:

Corporate Membership

- \$1,750 annual fee / No application fee
- Select up to five individuals within your company to attend EWPB events as members
- All corporate member representatives must meet the criteria of an individual member

Corporate Membership with Recognition

- \$2,000 annual fee / No application fee
- Select up to five individuals within your company to attend EWPB events as members
- All corporate member representatives must meet the criteria of an individual member
- Membership recognition (logo) on membership page of EWPB website

For more information, or to create a Corporate Membership, email Heidi at director@ewpb.org.

Thank you to our
EWPB Sponsors:

Annual Sponsor:



STEPHENS & STEVENS
MARITAL & FAMILY LAW

New Corporate Member:



SEPTEMBER 2025

Season Opener at Morton's The Steakhouse



SEPTEMBER 2025

Season Opener at Morton's The Steakhouse



SEPTEMBER 2025

Season Opener at Morton's The Steakhouse

